



Emergency and evacuation route.

In case of a fire happening, please act with calm and check the evacuation route and the location of **the fire extinguishers in each room (i.e. in the closet)** and in the main corridors.



Evacuation gate



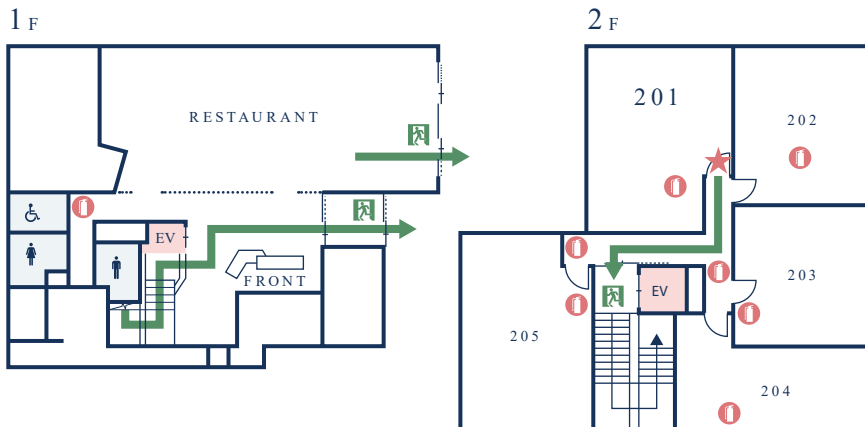
Evacuation route



Fire extinguisher



You are here

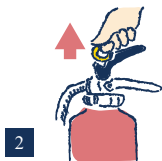


How to use a fire extinguisher

In the event of a fire, please make sure you understand **how to use a fire extinguisher** so that you can quickly put out the fire in its initial stages. If the flames have reached the ceiling, give up on initial fire extinguishing attempts and evacuate immediately.



When moving, hold the lever at the bottom.



Pull the yellow pin upward.



Point the nozzle at the source of the fire.



Squeezing the lever releases the fire extinguishing agent from the nozzle.



Emergency and evacuation route.

In case of a fire happening, please act with calm and check the evacuation route and the location of **the fire extinguishers in each room (i.e. in the closet)** and in the main corridors.



Evacuation gate



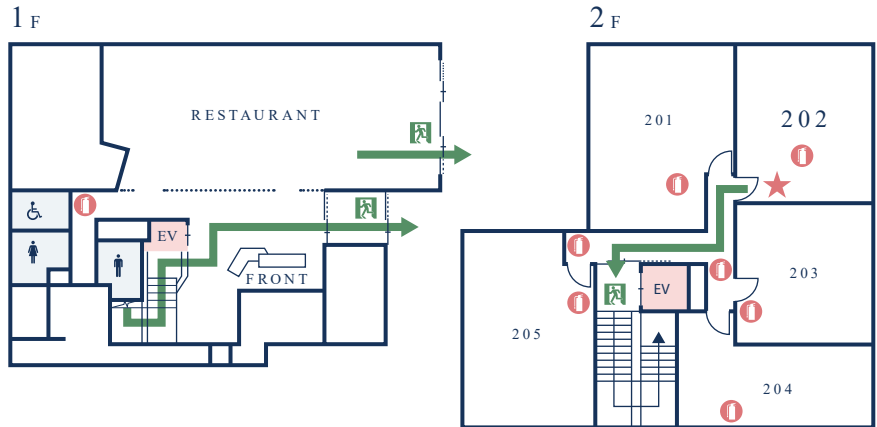
Evacuation route



Fire extinguisher



You are here



In the event of a fire, please make sure you understand **how to use a fire extinguisher** so that you can quickly put out the fire in its initial stages. If the flames have reached the ceiling, give up on initial fire extinguishing attempts and evacuate immediately.



How to use a fire extinguisher



1 When moving, hold the lever at the bottom.



2 Pull the yellow pin upward.



3 Point the nozzle at the source of the fire.



4 Squeezing the lever releases the fire extinguishing agent from the nozzle.



Emergency and evacuation route.

In case of a fire happening, please act with calm and check the evacuation route and the location of **the fire extinguishers in each room (i.e. in the closet)** and in the main corridors.



Evacuation gate



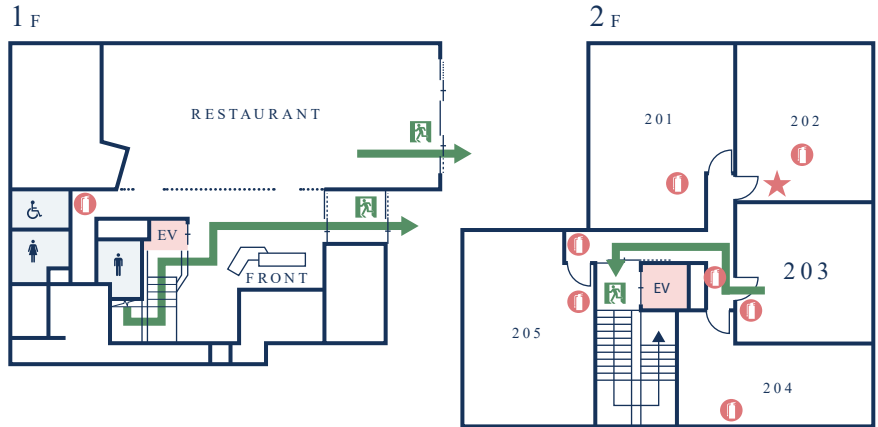
Evacuation route



Fire extinguisher



You are here



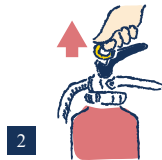
In the event of a fire, please make sure you understand **how to use a fire extinguisher** so that you can quickly put out the fire in its initial stages. If the flames have reached the ceiling, give up on initial fire extinguishing attempts and evacuate immediately.



How to use a fire extinguisher



When moving, hold the lever at the bottom.



Pull the yellow pin upward.



Point the nozzle at the source of the fire.



Squeezing the lever releases the fire extinguishing agent from the nozzle.



Emergency and evacuation route.

In case of a fire happening, please act with calm and check the evacuation route and the location of **the fire extinguishers in each room (i.e. in the closet)** and in the main corridors.



Evacuation gate



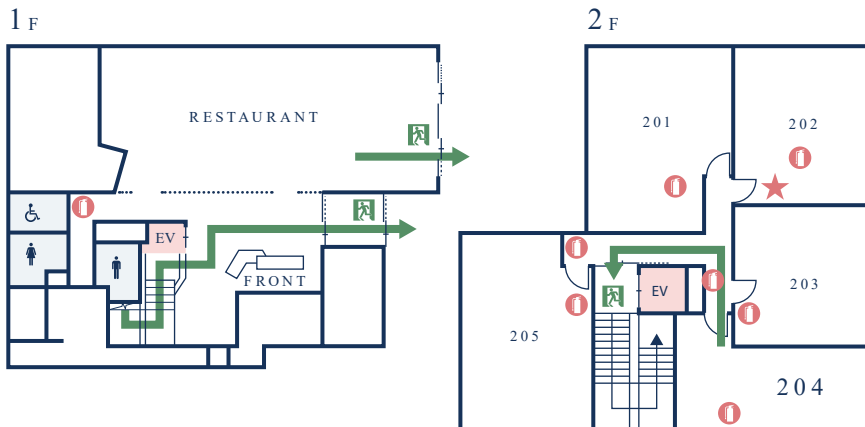
Evacuation route



Fire extinguisher



You are here

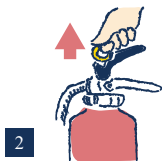


How to use a fire extinguisher

In the event of a fire, please make sure you understand **how to use a fire extinguisher** so that you can quickly put out the fire in its initial stages. If the flames have reached the ceiling, give up on initial fire extinguishing attempts and evacuate immediately.



1
When moving, hold
the lever at the bottom.



2
Pull the yellow pin upward.



3
Point the nozzle at
the source of the fire.



4
Squeezing the lever releases
the fire extinguishing agent
from the nozzle.



Emergency and evacuation route.

In case of a fire happening, please act with calm and check the evacuation route and the location of **the fire extinguishers in each room (i.e. in the closet)** and in the main corridors.



Evacuation gate



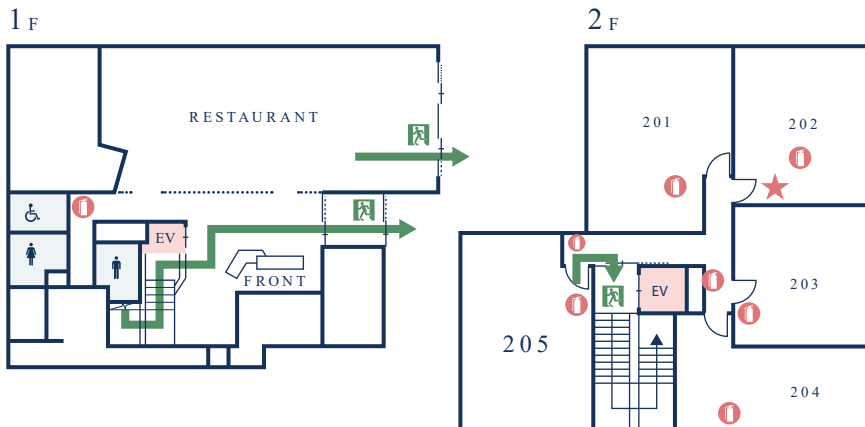
Evacuation route



Fire extinguisher



You are here

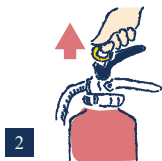


How to use a fire extinguisher

In the event of a fire, please make sure you understand **how to use a fire extinguisher** so that you can quickly put out the fire in its initial stages. If the flames have reached the ceiling, give up on initial fire extinguishing attempts and evacuate immediately.



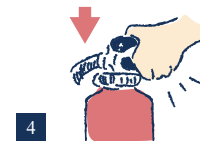
When moving, hold the lever at the bottom.



Pull the yellow pin upward.



Point the nozzle at the source of the fire.



Squeezing the lever releases the fire extinguishing agent from the nozzle.