

Our establishment is unstaffed from

p.m 10:00 → a.m 7:00



NO SMOKING

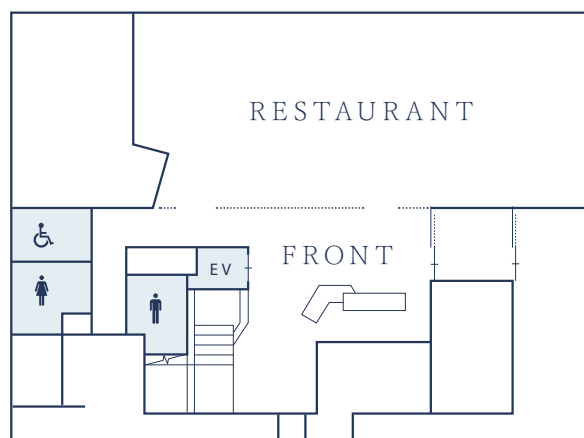


NO SMOKING

All indoors spaces (including our rooms and terraces)
in our establishment are **no smoking**.

*It includes electronic cigarettes.

*There is an astray outside just near the takeout window
where you can freely smoke.



Smoking area



In prevention of
fire accidents



In order to prevent the start of a fire, we recommend that you use
electric appliances like the dryer or the electric kettle (among others) appropriately.
Please be careful not to use the kettle while there is no water in it.



Emergency and evacuation route.

In case of a fire happening, please act with calm and
check the evacuation route and the location of
the fire extinguishers in each room (i.e. in the closet)
and in the main corridors.

Please do not use the elevator in case of a fire.



Evacuation gate

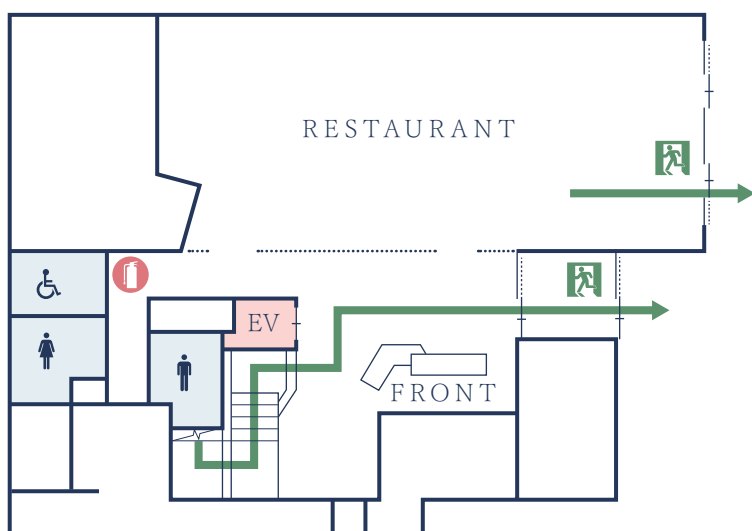


Fire extinguisher



Evacuation route

1 F



2 F

